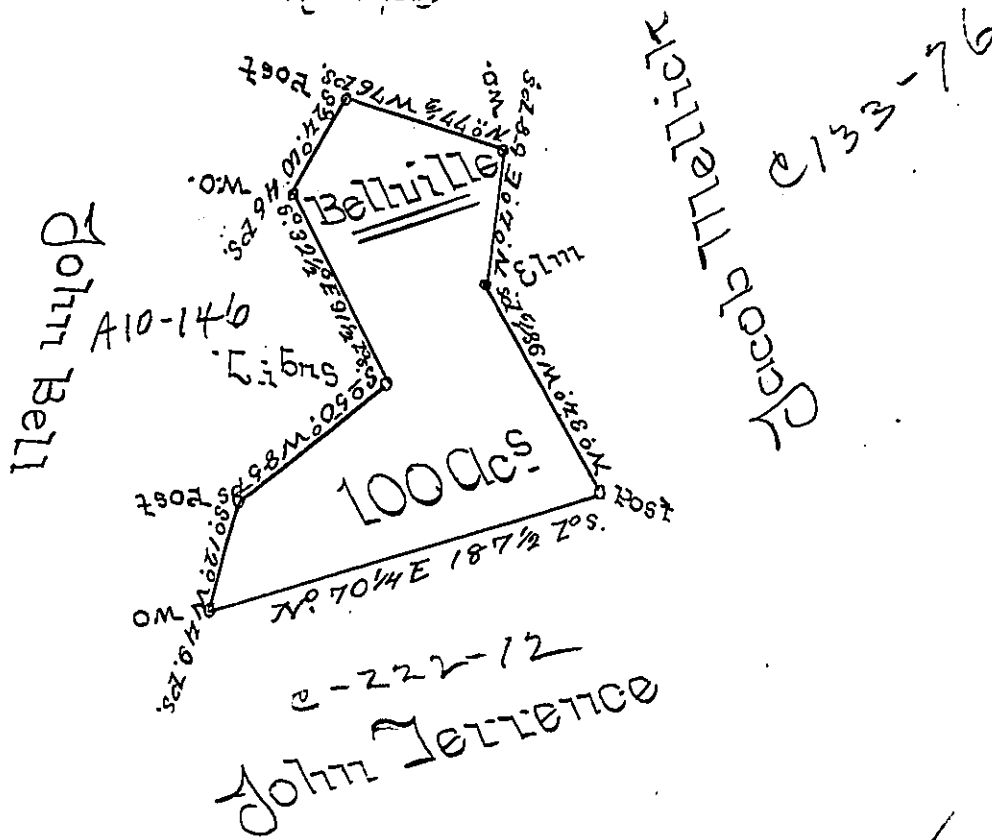


Plas Towlers Herts
R-146



C-222-12
John Terrence

A Draught of a Survey called "Bellville" Situate on the Waters of Charliers Creek ^{Allegheny} ~~Washington~~ County Containing 100 acs and the usual Allowance for Highways & executed March ye 30th 1790 in Pursuance of a Warrant granted to Joseph Bell for 100acs. dated ye 27th day of Aug^r 1785

Danl Brodhead Esq: S. G. L. Presley Nevill } p. s.
Math Ritchie }

Jos Bell conveyed to Saml Bell who conveyed to Timothy Keap who will apply for ye Patent -

IN TESTIMONY that the above is a copy of the original remaining on file in the Department of Internal Affairs of Pennsylvania, made conformably to an Act of Assembly approved the 16th day of February, 1833, I have hereunto set my Hand and caused the Seal of said Department to be affixed at Harrisburg, this second day of August 1898-

Jameel W. Latta
Secretary of Internal Affairs.